



# Fiordland College Newsletter

Phone: 03 249-7819

Thursday 28 November 2019

admin@fiordlandcollege.school.nz

## From the Principal's Desk



You will, no doubt, have heard considerable talk about the Minister of Education's new Donation Scheme which is available to Decile 1-7 schools. The scheme provides \$150 per student and, in return, these schools agree not to request donations for most curriculum-related activities.

As a Decile 9 school, Fiordland College is not eligible to register for that scheme. The Ministry provides schools with an annual operations grant but this is not sufficient to fund the range of educational opportunities and access to experiences that grow our students' learning and support their development at Fiordland College. We have been reliant upon parental financial contributions to make these happen. Our summer and winter co-curricular weeks are prime examples. We will continue to offer the same opportunities, access and experiences we have always done and will continue to request a contribution towards those experiences as appropriate.

As always, the support extended to Fiordland College by its community is one of the things that makes our school so special. We look forward to that ongoing support and thank you in advance for it.

E haere rā  
Lynlee Smith

## Final Week of School

Next week we have the following key timings:

<b>Mon</b>	Year 6	Orientation Day at College
<b>2 Dec</b>	Year 7, 9, 10	Normal School Day P1-5
	Year 8	Alternative programme
<b>Tue</b>	Years 7-10	Normal School Day P1-5
<b>3 Dec</b>		
<b>Wed</b>	Years 7-13	Variety of activities based on
<b>4 Dec</b>		End of Year and Prizegiving
	7.00pm	Whole School Prizegiving at the
		Fiordland Events Centre

<b>Thu</b>	Staff First Aid Training
<b>5 Dec</b>	<i>Please notify the office if you require your child to be supervised</i>

## Quote of the Week



Your identity is your most valuable possession.  
Protect it. - *Elastigirl, The Incredibles*

## Japanese Trip to Queenstown

On Friday last week, the Year 10 Japanese students went on the department's annual trip to Tanoshi, a Japanese restaurant in Queenstown.

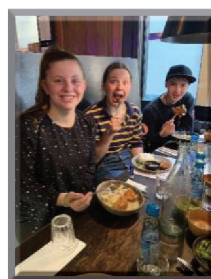
The trip is the celebration of all the incredibly hard work these students have put in over the year, as well as providing the students with the opportunity to order their lunch using Japanese, and trying authentic Japanese cuisine.

The food was incredible, and the students were awesome and really enjoyed their day.

A huge thank you must go to the staff of Tanoshi, who always go above and beyond for us, and to Mr Wilson for giving up his day to come along with us.



Scarlett Campbell,  
Zoe Denley, Lucy  
Holmes-Crombie +  
Fern Calder



Meg Wilson, Emma  
Wilson + Oliver  
Mann



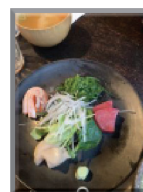
Paige Grieve,  
Maggie Knowles,  
Amelija Watson +  
Laura McDonald



Soraya Lind, Charlie Cunningham, Tayla Roberts  
+ Tom McMurtrie



Tori ten don



Sashimi teishoku

## Upcoming Events

Thu/Fri	28-29 Nov	Peer Support Training
Mon	02 Dec	Year 6 Visit Day Year 13 Leavers' Dinner
Tue	03 Dec	End of Block 4
Wed	04 Dec	Prizegiving - 7.00pm

**Reminder - Diaries to be signed and handed to form teachers on FRIDAY!**