



Weekly Newsletter

FROM THE PRINCIPAL

I thought you might appreciate a little bit of an update of what is happening for us in our Kāhui Ako (Fiordland Northern Southland Community of Learning).



Within School Teacher Appointments

Five of our entitled eight Within-School teachers have been appointed – Congratulations to Shelley Wilson and Dan Waldie from Fiordland College; Kate Excell and Diana McGlade from Te Anau Primary and Wendy Coghlan from Northern Southland College. At present there are two letters sitting with the Secretary of Education, Iona Holstead, requesting a variation of the eligibility 'rules'. We are hoping that, once more the MoE will recognise the challenges posed by their tight criteria for appointees, in terms of the smallness of our schools, and our far-flung geography, so that our final three appointments can be made.

Early Childhood Liaison

We are very pleased to welcome on board two Early Childhood Education representatives, Vanessa Hamilton (Lumsden Play Centre) and Claire Shaw (Fiordland Kindergarten). Vanessa and Claire will be joining us at our FiNSCoL meetings, and we know that their input will be invaluable, especially as we strive towards helping our children on a learning pathway which is smoothly paved with seamless and successful transitions.

"Teamwork makes the dream work" (John Maxwell)

E haere rā
Lynlee Smith

WELCOME

We welcome Miss Bindy Baines to our staff this week. Miss Baines is our new Itinerant Music teacher and is skilled in a variety of instruments. She will be here on Thursdays.



We also welcome Mrs Amy Waldie who has joined the Maths department helping with the Year 7-9 programme - especially with ICT usage. Mrs Waldie will be here on Fridays.

QUOTE OF THE WEEK

"A curious mind is never bored."
- Min Kim



EX STUDENTS



Congratulations to ex students **Jennifer Carruthers** (left) and **Sophia Humphries** (right). They were presented with their Queen's Scout Award by Dame Patsy Reddy (middle) at Government House in Auckland.

MERIDIAN ENERGY

Meridian Energy's Girls with Hi Vis® Event

Girls with Hi-Vis® is an initiative by Ultimit. The objective is to raise awareness and increase the number of women working in trade roles in the horizontal-built Infrastructure Industries.

Meridian Energy held a Girls with Hi-Vis® event on 19 June at the Manapouri power station. All Year 10 girls attended this event. They were able to experience first-hand what a career in infrastructure offers, see what the jobs look like, complete fun hands-on activities and listen to inspirational stories about the industry. The girls had an awesome fun filled day.



Esther Cole



Caitlin Aitken



Caitlin Aitken & Destinee Henry

Weekly Newsletter Continued...

GATEWAY

The purpose of Gateway is to enable schools to provide senior students with opportunities to access structured workplace learning that has:

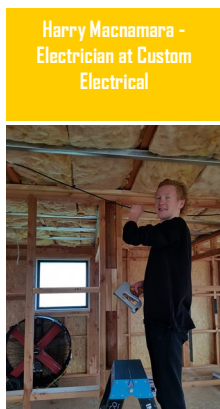
- a formalised learning arrangement set in the workplace
- specified knowledge and skills that a student will attain
- specified assessment methods (workplace learning).

We align our Gateway programmes to the different Vocational Pathways.

Sam Carruthers -
Electrician at Te Anau Electrical



Kento Frew - Chef at
Distinction Hotel and
Villas



Harry Macnamara -
Electrician at Custom
Electrical



Rory McCorkindale - work
placement at Carran
Scott Contracting

SCIENCE IN THE HOLIDAYS

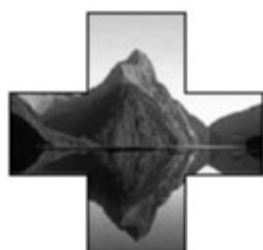
University of Otago Science Expo

Corner of St David and Cumberland Streets
Sat 7 July 10am – 4pm and Sun 8 July 10am – 2pm

All welcome – Free entry

The International Science Festival website is now live with over 230 events. Here's the link to the University Science Expo page <http://www.scifest.org.nz/events/otago-university-expo>. You will notice our advertising includes a Peekavu app, just download it and try the game to see if you can fly our robot to the moon – it's fun (it's also free)! <https://itunes.apple.com/nz/app/peekavu/id972176556?mt=8> or <https://play.google.com/store/apps/details?id=com.peekavu&hl=en>

Newsletter Sponsored by:



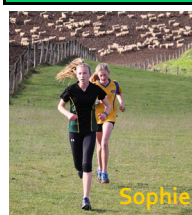
**Fiordland
Community**

CROSS COUNTRY

Last week, a group of 23 students participated in the Northern Primary Schools' Cross Country held at the Willans farm in Te Anau. Well done to everyone.

Northern Primary Cross Country Champs 2018

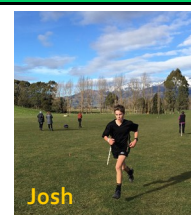
11 Year Old Girls	2nd	Ellen Leslie
	6th	Chelsea Ledington
12 Year Old Girls	5th	Jorja Brown
	6th	Tessa Gamble
12 Year Old Boys	4th	Jack White
	5th	Lije Day
13 Year Old Girls	2nd	Sophie Willans
	6th	Talia Otene
13 Year Old Boys	2nd	Josh Ruddenklau
	5th	Robbie Leslie



Sophie



Ellen



Josh

UPCOMING EVENTS

Mon	25 Jun	Fiordland Swimming Club AGM 7.30pm Primary School Staffroom All welcome.
Wed	27 Jun	Board of Trustees Meeting 7.30pm
Wed-Fri	04-06 Jul	Year 13 Biology trip - Portobello
Fri	06 Jul	Last Day of Term 2 Block 2 Finishes
Sat - Sun	07 Jul - 22 Jul	School Holiday Break
Mon	23 Jul	First Day Term 2
Fri	27 Jul	Year 10 Career Fest IVC
Wed	01 Aug	Board of Trustees meeting
Tue-Fri	07-10 Aug	Co-Curricular Week - All students

**We Guarantee Friendly, Confidential,
Experienced and Professional Service**

Phone (03) 249-9268 with any enquiries
70B Town Centre, Te Anau